

LO: To plan my writing by talking about the important parts to have in a poem.

Success Criteria:

I can identify the pattern in a poem.

I can use my own similes and metaphors to create a poem.

I can draft and rewrite my work making improvements.

**Head of the World.**

He was the World.

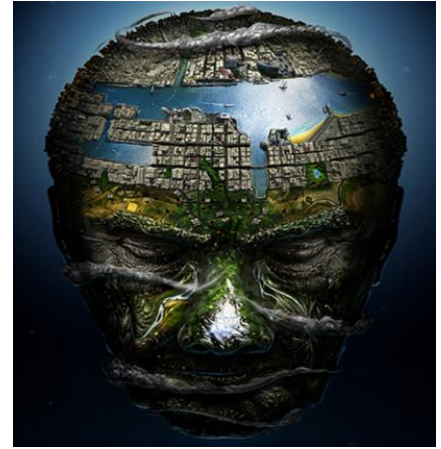
His nose was like an enormous, ice-tipped mountain.

His forehead was a mighty river flowing across his brow.

His eyes were like deep canyons; colossal gouges chiselled from his rocky face.

His tears were waterfalls cascading down his grassy cheeks.

He was the World.



**Task 1: Identify the text features:**

Create a key of each of these things you can spot.

- first and last line are identical (the same).
- similes
- metaphor
- adverbs
- powerful adjectives
- interesting verbs
- descriptive nouns
- interesting punctuation
- variety of sentence starts

You might not find all these things, only colour the things you do find.

**Task 2:**

Create your own poem inspired by one of the pictures we have looked at this week. Aim to write 2-3 verses using your adjective, similes and metaphors to help you. You can use the poem above as your first verse and continue it or start your own. You could even write two poems, one for each picture and then use your favourite for Friday's work.

Each verse should use the following structure:

- First and last line identical
- 4-6 descriptive lines in the middle.
- These should include 1-3 similes, 1-3 metaphors and some brilliant adjectives.

If you finish early, read your poem aloud. Edit and improve it. Does it work better as a poem if you keep the sentence openers the same, or if you try having a different first word on each line?